

KILOMBERO
SUGAR COMPANY
AN ILLOVO SUGAR AFRICA COMPANY



KSCL NEWSLETTER

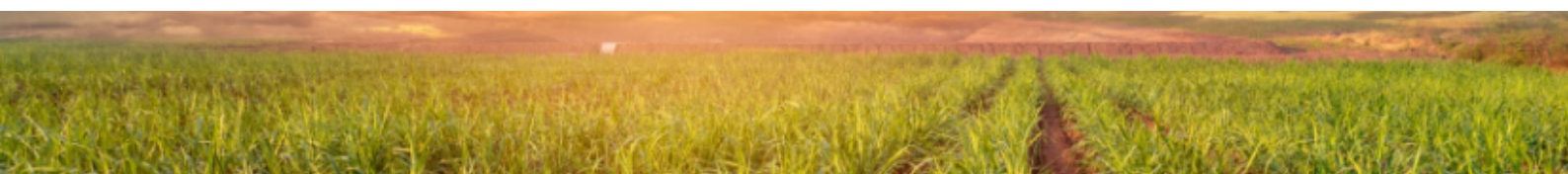
8TH EDITION

AUGUST 2023



Content

Message From The MD	1
KSCL Foresees Improved Production as it Launches New Crushing Season	4
TIC Signs Performance Contracts With Investors To Tackle Commodity Shortage	5
Celebrating Women in Engineering	8
Empowering Local Heroes: KSCL Donates Computer to Police Station	10
AWF, Swedish Embassy Visits KSCL	11
Powerful Collaborations: Treasury Registrar, ABF Visit KSCL	12
Coming Together for a Greener Future	14
Honoring the Late Edward Moringe Sokoine	16
Securing Sustainable Partnerships	17
KSCL Celebrates Nurses Day	18
Best Workers for 2023	20
World Day for Safety and Health at Work Exhibitions	22
Ruaha Market Support	24
KSCL Empowers Future Marketers	25
Morogoro Business Council Forum	27
Accelerate Mompreneur	28
AMCOS Equipped	30
KSCL Hosts Group Leadership Development Programme (GLDP)	31
Farewell to our Comrades – John Masanja & Bruno Daniel	34
Values Campaign Kicks-Off	35
“Bwana Sukari” Shines at the 47th Dar Es Salaam International Trade Fair	36
Commercial Review Session	39
KSCL Joins Other Stakeholders to Commemorate Nelson Mandela Day	41
New Morogoro RC Visits KSCL	43
Nane-Nane Exhibitions 2023	46
Minister Kijaji’s First Visit to KSCL	47



MESSAGE FROM THE MD



Welcome to our Eighth Edition of the KSCL Newsletter to get a highlight of the business, key projects, safety issues, key engagements and events undertaken within and outside our company.

Safety

Management wants to thank all KSCL employees and contractors for adhering to safety guidelines during the previous season and through the maintenance period. There were no Lost Time Injuries recorded. However, during off-crop we had two serious incidents which could potentially have led to fatalities. One case involved a contractor being hit on his head and the other involved a work injury which resulted in amputation of the employee's finger.

We would also like to extend our deepest sympathies to our fellow colleagues at Nchalo Malawi Operations where two employees were electrocuted while repairing overhead lines, leading to one death and one serious injury. The lessons learnt from this accident was that laid down safety procedures were not properly followed, and the correct safety equipment was not used. As a result, we at Kilombero Sugar have revisited our procedures where similar activities are carried out to make sure a similar accident does not happen. This enhances the level of awareness and precautions that our people are required to take prior to executing such tasks.



I want to emphasize very strongly that we must put safety first in everything that we do, at work, at home or any place that we may be. If any of you feel unsafe or that a situation is unsafe you have the right and the responsibility to stop any work and report it before proceeding with any activity in that area.

Safety First!

Yes... Safety is more important than production!

Let's all continue being vigilant to ensure that we are all safe and remain safe, together with our families.

Business Update

The 2023/24 production season commenced on the 14th of June for the K2 factory and 19th June 2023 for the K1 factory. The delayed start-of was caused by the unusually extended rainy season.

The target for the season is to crush a total of 1,280,000 tons of cane of which 655,000 tons will come from KSCL Estate Agriculture and 625,000 tons from Kilombero Growers.

The budgeted sugar production for the 2023/24 season is 129,080 tons, with the sucrose target of 12.10% for both the Estate and the Growers.



I would like to thank all our employees for your efforts and hard work in the 2022/23 season and appreciate the support extended by our stakeholders which have contributed to the success of the business to date. I would like to request your continued support in the 2023/24 production season.

Production of Extra Neutral Alcohol (ENA) at IDTL started on 15th June 2023 against the plan to start on 6th June 2023 due to low levels of molasses stock and the delay in sugar mills starting up. The budget for 2023/24 season is 14,514 kL of ENA. There has been a continuous increase in demand for our ENA which provides us an opportunity for growth.

Expansion Update

The K4 Expansion project is progressing steadily now with construction works gaining further momentum. While the construction work is slightly behind schedule, the procurement of equipment is making good progress with good deliveries of equipment to site.



As at the end of July 2023, the overall expansion project progress stood at 60 percent.

Project commissioning is projected to be end of July 2024.

GUY WILLIAMS
COUNTRY MANAGING DIRECTOR



KSC FORESEES IMPROVED PRODUCTION AS IT LAUNCHES NEW CRUSHING SEASON

On June 19, 2023, Kilombero Sugar Company marked a significant milestone for the year, as it launched the start of its highly anticipated 2023/24 crushing season. The momentous event took place at the K1 factory, with the esteemed presence of Kilombero District Commissioner, Hon. Dunstan Kyobya.

This event was preceded by the launch of the K2 mill on June 14, 2023, symbolizing the beginning of a crucial period for sugar production, as the company aims to produce a total of 129,080 tons of sugar for the season.

Beyond its impact on sugar production, the start of the crushing season will also contribute to the creation of seasonal employment opportunities. As production activities intensify, additional workers will be recruited to support the increased operations.



Kilombero Sugar Company remains dedicated to its role as a key player in the region's economy, while actively generating employment and sustaining agricultural growth.



TIC SIGNS PERFORMANCE CONTRACTS WITH INVESTORS TO TACKLE COMMODITY SHORTAGE

[→ Continue reading | Next Page](#)

TIC SIGNS PERFORMANCE CONTRACTS WITH INVESTORS TO TACKLE COMMODITY SHORTAGE

In a significant development on June 23, 2023, the Tanzanian Government witnessed the signing of performance contracts between the Tanzania Investment Centre (TIC) and various investors. The contracts aim to address the scarcity of important commodities in the country including sugar.

Among the notable signings was Kilombero Sugar Company Limited (KSCL), which entered into a contract for its ambitious expansion project in the Morogoro region. The project entails the expansion of sugarcane farming and the sugar factory, with an estimated cost of TZS 566 billion equivalent to USD 238.5 million.

The completion of this project is expected to generate approximately 15,000 indirect jobs within the value chain.

Moreover, the expanded capacity will enable the company to produce 271,000 tons of sugar per season, significantly reducing the reliance on sugar imports.

These performance contracts signify the government's commitment to attracting investment, fostering economic growth, and addressing crucial commodity shortages in Tanzania. Kilombero Sugar Company continues to support the government's ambition of self-sufficiency as it continues to invest towards sugar-sufficiency in Tanzania.



KSCL Managing Director, Guy Williams signing the performance contracts.



Tanzania Investment Centre (TIC) Executive Director Gilead Teri (right) and Kilombero Sugar Company Limited (KSCL) Managing Director, Guy Williams, exchange documents after signing the performance contract.

**OVER 60 YEARS
IN TANZANIA**



**KILOMBERO
SUGAR COMPANY**
AN ILLOVO SUGAR AFRICA COMPANY

TIC SIGNS PERFORMANCE CONTRACTS WITH INVESTORS TO TACKLE COMMODITY SHORTAGE



**UTAMU
100%**

NUMBER 1 PRODUCER OF SUGAR IN TANZANIA



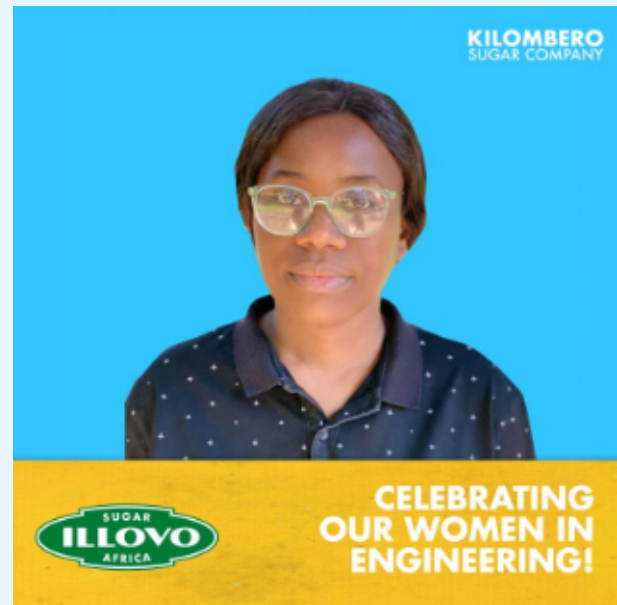
**KILOMBERO
SUGAR COMPANY**
AN ILLOVO SUGAR AFRICA COMPANY

CELEBRATING WOMEN IN ENGINEERING

Kilombero Sugar Company Limited is proud to highlight the achievements of its remarkable women engineers on women engineers' day – 23rd June, that were featured in a social media campaign by Illovo Sugar Africa. Three outstanding engineers have been featured for their valuable contributions to the field of engineering and their dedication to advancing the sugar manufacturing process.



Agnes Kimbi is a talented engineer at Kilombero Sugar Company, with a decade of invaluable service. Agnes is a registered professional engineer who takes pride in witnessing the positive impact of engineers' problem-solving skills. She finds fulfillment in tackling diverse challenges and supervising individuals with different skill sets, all working together to achieve common goals.



Petites Geoffrey Kaihula, is another engineer with 6 years of dedicated service with the company, has risen through the ranks from an Engineer in Training to Production Team Lead in Manufacturing. Petites' passion for the industry stems from her hands-on experience in sugar manufacturing.

CELEBRATING WOMEN IN ENGINEERING



Lilian Shayo's journey into engineering is unconventional, having initially pursued a BA in Tourism. However, her curiosity about factory operations led her to embrace the world of sugar processing at KSCL. In her nearly 8-year tenure, Lilian has excelled as a Packing Station Supervisor and Quality and Food Safety Manager before becoming the Production Team Lead. Her recent achievement in a Sugar Engineering Course highlights her dedication to continuous learning.

These inspiring women engineers prove that passion, determination, and embracing opportunities can lead to remarkable achievements. They encourage aspiring women engineers to believe in themselves, embrace challenges, and continue expanding their knowledge and understanding.

Kilombero Sugar Company Limited proudly celebrates these women and all women engineers worldwide for their invaluable contributions to the field of engineering. Their achievements inspire the next generation of engineers and exemplify the potential for progress and success in the industry.

BUILDING RELATIONS FOR A THRIVING COMMUNITY



KILOMBERO
SUGAR COMPANY
AN ILLOVO SUGAR AFRICA COMPANY

EMPOWERING LOCAL HEROES: KSC DONATES COMPUTER TO POLICE STATION



We were honored to present the Kilombero Police Station - K1, located in Kidatu ward, with a brand-new computer. The donation was gratefully received by A/ Inspector Godfrey Sambu, the Officer-in-Charge (OCS), who plays a crucial role in fostering collaboration among all stakeholders in matters of safety and security.

We firmly believe in supporting our dedicated law enforcement officers, who tirelessly work to ensure the safety of our community. This contribution will significantly enhance their efficiency and effectiveness in serving and protecting us all.

By joining hands, we strive to create a safer and stronger community, where security remains a top priority. Together, we can empower our law enforcement agencies and build a harmonious society.



The then Business Affairs Manager Bruno Daniel (L) and Estate Support Services Head Willem Victor (C) represented the company during the handover, on the right is A/Inspector Godfrey Sambu.



AWF, SWEDISH EMBASSY VISITS KSC



In our ongoing commitment to sustainability, we recently welcomed a delegation from the African Wildlife Foundation (AWF) and Mr. Brasio Msungu, a representative from the Swedish Embassy to the KSCL Estate.

AWF, alongside various partners, has launched the SustainEco project, aiming to foster ecosystem management among governments, businesses, and local communities. This initiative seeks to strike a balance between sustainability and growth, ensuring a sustainable future for all.

During the meeting with AWF, we had the opportunity to showcase the expected impact of our Expansion Project and discuss the implementation of sustainable management practices. The gathering proved instrumental in exploring avenues for further collaboration, with a shared focus on environmental and social sustainability.

As we continue to collaborate with diverse stakeholders, we remain dedicated to driving positive change, conserving our environment, and building a sustainable future for generations to come



A delegation from AWF and the Swedish Embassy poses for a group photo with KSCL staff.



Head of Growers Department, Pierre Redinger (left) with a delegation from AWF and the Swedish Embassy.

POWERFUL COLLABORATIONS: TREASURY REGISTRAR, ABF VISIT KSC



ABF Directors, led by CEO George Weston, and Treasury Registrar of the Government of Tanzania, Nehemiah Mchechu, recently attended a shareholders meeting. Following this, they embarked on a visit to our expansion project, set to complete in 2024 that will more than double the company's sugar processing capacity.

During the visit, Weston and Mchechu witnessed the progress of the ambitious expansion project which is expected to bring numerous benefits such as sugar self-sufficiency in Tanzania, increased employment opportunities and a significant boost to the local economy.



Group Operations Director Craig Jensen with the Treasury Registrar Nehemiah Mchechu

POWERFUL COLLABORATIONS: TREASURY REGISTRAR, ABF VISIT KSC



The Company, responsible for driving this transformative project, boasts a unique ownership structure. The Government of Tanzania holds a 25% stake, while Illovo Sugar Africa—a wholly owned subsidiary of Associated British Foods (ABF), owns 75%.

This unique ownership structure demonstrates a shared commitment to the growth and development of the sugar industry in the country.

Together, they are unlocking new opportunities and positioning Tanzania as a major player in the global sugar market.

As the expansion project moves forward, Tanzania is set to solidify its position as a leading sugar producer, driving economic growth and prosperity in the region. The collective efforts of these stakeholders are paving the way for a thriving sugar industry and a prosperous future for Tanzania.



**KILOMBERO
SUGAR COMPANY**
AN ILLOVO SUGAR AFRICA COMPANY

TANZANIANS' CHOICE



COMING TOGETHER FOR A GREENER FUTURE

[→ Continue reading | Next Page](#)

COMING TOGETHER FOR A GREENER FUTURE

In a remarkable display of commitment to environmental conservation, the staff and management of KSCL recently united in a tree planting campaign during the annual Environment Week celebrations at the beginning of June. This initiative forms part of the company's endeavor to re-forest areas on its estate.

Led by the United Nations Environment Programme (UNEP) and held annually on 5 June since 1973, World Environment Day is the largest global platform for environmental public outreach and is celebrated by millions of people across the world.



Staff and management of KSCL pose for a group photo after the tree planting exercise.



Finance Head - Fakihi Fadhili

With a deep understanding of the importance of conserving our environment, the team eagerly participated and planted trees, symbolizing their dedication to nurturing nature and protecting the environment.

By actively engaging in initiatives such as this tree planting campaign, KSCL aims to create a lasting impact and contribute to a better world for future generations and inspire others and foster a sense of environmental stewardship within the broader community.



Managing Director Guy Williams planting a tree during the campaign.

As we celebrate the successes of Environment Week, we remain committed in our dedication to preserving the environment and building a thriving community that prospers long after our time. By taking small steps together, we can create a greener and more sustainable world for all.

HONORING THE LATE EDWARD MORINGE SOKOINE



On 23rd May 2023, we had the privilege of engaging in a fruitful exchange with the esteemed Hon. Abdallah Ulega, the Minister for Fisheries and Livestock, who graced the Opening Ceremony of the 18th Sokoine Memorial Week in honor of the Late Edward Moringe Sokoine.

Our team actively participated in the commemorative event held from 23rd to 26th May 2023, at the Edward Moringe Campus in Morogoro with the theme "Enabling Youth Engagement in the Agricultural Sector: Policies, Guidelines, and Performance."

As Kilombero Sugar Company, we are proud to be part of this significant occasion, which highlights the importance of youth involvement in agriculture and emphasizes the creation of an enabling environment for their participation.



SECURING SUSTAINABLE PARTNERSHIPS

On 18th May 2023, a significant milestone was achieved as we concluded negotiations and held a brief signing ceremony to roll over our Cane Supply Agreement (CSA) with the leadership of Kilombero Growers Agricultural Marketing Cooperative Society (AMCOS).

This agreement solidifies our commitment to maintaining a strong and reliable partnership with the dedicated Kilombero Growers. Through our unique operating model of division of proceeds, we ensure that they have a consistent and dependable off-taker for their cane.



Head of Growers Department, Pierre Redinger (left) witnessing as AMCOS representative Bakari Mkangamo and KSCL Managing Director - Guy Williams signing the CSA.

The renewed agreement not only ensures the sustainability of our business but also fosters shared prosperity between us and the Kilombero Growers. By working together, we create an environment where both parties can thrive and benefit from the fruits of our collaboration.

We are proud to continue our partnership with the Kilombero Growers, who play a crucial role in the success of our operations.



Communications and Stakeholder Relations Manager - Willa Haonga (right) speaking at the ceremony.

This agreement reinforces our shared vision of sustainable agriculture and economic growth, and we look forward to a fruitful and prosperous future together.

KSCL COMMEMORATES NURSES DAY



KSCL Communications and Stakeholder Relations Manager -Willia Haonga (second right), handing over a donation of medical supplies to Dr. Steven Kunjumu of Mkamba-Nyandeo Health Center (left).

On 12th May 2023, we came together to honor and celebrate the remarkable contributions of our dedicated and hardworking nurses on Nurses Day. It was a day filled with appreciation and recognition for the invaluable role they play in our community's healthcare system.

The celebration kicked off with a vibrant morning march, where nurses and healthcare staff proudly marched through the streets, demonstrating their passion for their profession and commitment to providing quality care.



Dr. Steven Kunjumu of Mkamba-Nyandeo Health Center speaking during a handover of medical supplies donated by KSC.

KSCL COMMEMORATES NURSES DAY



KSCL Communications and Stakeholder Relations Manager -Willi Haonga (third left), handing over a donation of medical supplies to Dr. Eliya Nixon Mwakibete of Kidodi Health Center (second right).

As part of our commitment to supporting healthcare professionals, we had the privilege of donating medical equipment to two neighboring health centers.

The first was Mkamba/Nyandeo Health Center, located in Kilombero District, and the second was Kidodi Health Center, situated in Kilosa District.

These donations aim to enhance the healthcare services provided by these

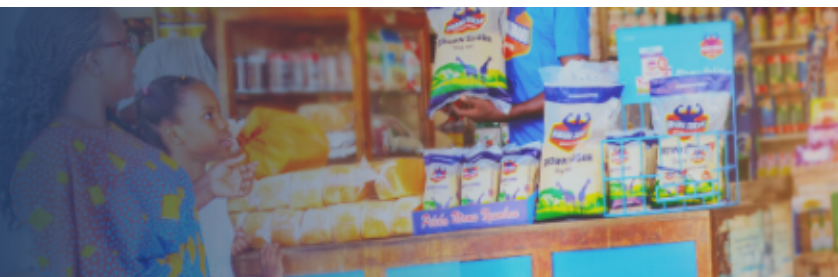
centers and assist our nurses in delivering efficient and effective care to the communities they serve.

We take immense pride in supporting our healthcare professionals, who are the backbone of our community's well-being. Their dedication, compassion, and expertise are instrumental in ensuring the health and safety of our community members.



KILOMBERO SUGAR COMPANY
AN ILOVO SUGAR AFRICA COMPANY

CLOSER TO YOU



KSCL ANNOUNCES BEST WORKERS

In an exhilarating announcement, the Best Worker Selection process for 2023 came to a close, and the exceptional employees who stood out were announced.



Michael Sanga - Fire Officer in the Estate Support Services Department, emerged as the National Winner, showcasing his unwavering dedication to ensuring safety within the company.



Aisha Omary - Herbiciding Supervisor in the Kilombero Estate Agric Department, was recognized as the Regional Winner.



Bumija Mruma - Laboratory Technician in the Estate Support Services Department, earned the title of District Winner, with his meticulous attention to detail in the lab.

KSCL ANNOUNCES BEST WORKERS

At the Estate Level, several outstanding individuals were acknowledged for their exceptional performance:



Anuel Mandemile, General Worker in the Kilombero Estate Agric Department



Emmanuel Sylvester, Sales Representative in the Commercial Department



Samwel Uhadi, Grower Support Officer in the Grower Agriculture Department



Hamis Ndunguru, Forklift Driver, in the Finance Department



Oswald Komba, Senior Maintenance Worker in the Estate Support Services Department



Melkior Lupagalo, Credit Administrator in the Finance Department



Marcus Nkongo, Senior Clerk in the Kilombero Estate Agric Department

WORLD DAY FOR SAFETY AND HEALTH AT WORK EXHIBITIONS



We are delighted to share the exciting news from the World Day for Safety and Health at Work Exhibitions, which took place in Morogoro on 28th April 2023 under the theme "A safe and healthy working environment is a fundamental principle and right at work." The event served as a platform to celebrate organizations that prioritize workplace safety and promote a culture of well-being for their employees.

KSCL emerged as the First Winner in Workplace Safety, earning a well-deserved recognition In the Sugar Manufacturing Sector.

Hon. Prof. Joyce Ndalichako, the Minister of State in the Prime Minister's Office responsible for Labor, Youth, Employment, and Persons with Disabilities, presented the certificate and award to representatives of the Company.



The Minister of State in the Prime Minister's Office responsible for Labour, Youth, Employment, and Persons with Disabilities, Prof Joyce Ndalichako, presenting a certificate and award for the first winner in Workplace Safety in the Sugar Manufacturing Sector to the then Business Affairs



The Minister of State in the Prime Minister's Office responsible for Labour, Youth, Employment, and Persons with Disabilities, Prof Joyce Ndalichako (4th R) posing for a photo with KSCL staff.

WORLD DAY FOR SAFETY AND HEALTH AT WORK EXHIBITIONS



This recognition highlights the company's dedication to ensuring the safety and well-being of its workforce. By implementing robust safety measures, conducting regular training, and fostering a culture of awareness, Kilombero Sugar Company sets a commendable example for the industry.

Creating a safe and healthy workplace is not only a legal obligation but also a moral responsibility. Organizations like Kilombero Sugar Company serve as role models, demonstrating that investing in workplace safety leads to increased productivity, employee satisfaction, and overall organizational success.



KILOMBERO SUGAR COMPANY
AN ILOVO SUGAR AFRICA COMPANY

NUMBER 1 PRODUCER OF SUGAR IN TANZANIA

RUAHA MARKET SUPPORT



In a commendable display of corporate social responsibility, Kilombero Sugar Company extended a helping hand to the Ruaha community after a devastating fire broke out at the local market earlier this year. The company generously donated roofing sheets and other essential construction materials to aid traders in rebuilding their stalls and livelihoods.

Moreover, recognizing the vital role of women food vendors in the community, the company also donated sugar to support their small enterprises. This act of kindness is expected to bolster their businesses, empowering them to continue serving the community with their much-needed services.

Kilombero Sugar Company's philanthropic efforts have made a significant difference in the lives of the Ruaha community, showcasing the company's commitment to uplifting and supporting the local population in times of need.



Communications and Stakeholder Relations Manager – Willa Haonga (3rd R) presenting the donation to traders at the Ruaha market.

The swift response from Kilombero Sugar Company provided a glimmer of hope to the affected traders, offering them the means to restore their businesses and regain their financial stability.



Communications and Stakeholder Relations Manager – Willa Haonga (R) led the KSCL team to present the donation to traders at the Ruaha market.

KSCL EMPOWERS FUTURE MARKETERS



On 27th May 2023, a significant event called the Marketing Forum was held at the University of Dar es Salaam (UDSM) with the active participation of the Kilombero Sugar Company's Commercial Department. The forum aimed to provide a platform to empower students with marketing interests from various universities in Dar es Salaam.

The event proved to be a successful endeavor, achieving its objectives of imparting valuable knowledge to university students and sharing experiences about the crucial role of digital marketing in modern business.

One of the highlights of the Marketing Forum was its impact on the participating students. Participants were exposed to essential skills required to thrive in the competitive job market. Panelists shared knowledge that will significantly support students in their academic pursuits.



Trade Marketing Manager for KSCL, Olympia Fraten speaking at the forum.



KSCL's Commercial Head -Fimbo Butallah addressing Forum attendants.

KSCL EMPOWERS FUTURE MARKETERS

“Bwana Sukari” used the opportunity to showcase its products and engage with Forum attendants. The Forum served as a great opportunity to raise brand awareness and instill brand loyalty and love among the students.

The exhibition of various products by student entrepreneurs showcased the

entrepreneurial spirit and innovation among Tanzanian youths.

The Marketing Forum left a lasting impression on participants. It played a pivotal role in empowering the future marketers and strengthening the connection between academia and the business world.



A TRUE DEFINITION
OF EXCELLENCE



KILOMBERO
SUGAR COMPANY
AN ILOVO SUGAR AFRICA COMPANY

MOROGORO BUSINESS COUNCIL FORUM



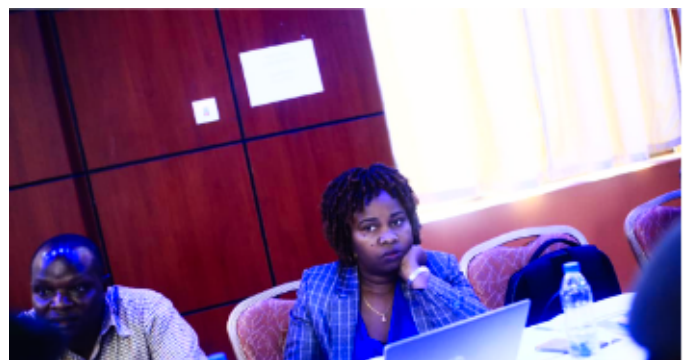
Kilombero Sugar Company (KSCL) participated in the Morogoro Regional Business Council Meeting held on June 15, 2023.

During his opening speech at the meeting, the new Morogoro Regional Commissioner, Hon. Adam Malima urged stakeholders in the business and economic sectors to collaborate in creating a conducive environment that will attract investors to invest in various sectors, thereby generating employment and boosting the economic income of the region and the nation.

Speaking at the meeting, Fimbo Butallah, the Commercial Head of Kilombero Sugar Company, stated that the company is expanding its factory to increase sugar production and create employment opportunities for people in the region and country as a whole. He mentioned that in addition to providing jobs, the factory sources sugarcane from over 8,000 growers who produce an average of 600,000 tons of sugarcane per year.

Butallah also highlighted that with the expansion of the factory, the demand for sugarcane will increase, necessitating the involvement of more farmers to meet the requirement of producing one and a half million tons of sugarcane annually to meet the factory's needs.

Apart from participating, KSCL sponsored the meeting as a demonstration of the company's commitment to continue supporting business forums to open up economic opportunities for the Morogoro region and the nation.



KSCL Communications and Stakeholder Relations Manager – Willa Haonga

ACCELERATE MOMPREENEUR



Attendants following proceeds of the speakers' panel during the event.

On 17th June 2023, an impactful event called "Accelerate MomPreneur" took place at Dar Coral Beach Hotel in Dar es Salaam, with the enthusiastic participation of the Kilombero Sugar Company (KSCL) Commercial and Finance Departments.

The event aimed to empower women entrepreneurs, providing them with a platform to learn, share, and engage.

The "Accelerate MomPreneur" event was graced by the presence of the Guest of Honour, Hon. Ambassador of South Africa to Tanzania, HE Ms. Noluthando Mayende-Malepe.

The day was filled with inspiring panel discussions, including topics such as

Unlimited Financial Opportunities, Work-Life Balance, Personal Branding, and Expert Advice from psychological professionals on how to live a happy and impactful life.



Trade Marketing Manager for KSCL, Olympia Fraten (front right) with the guest of honour Ambassador of South Africa to Tanzania, HE Ms. Noluthando Mayende-Malepe (front left).

ACCELERATE MOMPREENEUR



KSCL staff showcasing Bwana Sukari products at the event.

The "Accelerate MomPreneur" event received extensive media coverage and PR across various digital platforms, TV, radio, and newspapers, amplifying its positive impact and inspiring even more women in the community. As one of the event sponsors, KSCL through its consumer brand - "Bwana Sukari" was able to raise brand awareness and underscore the company's commitment to women empowerment.

Moreover, the event served as an excellent networking platform, fostering connections and collaborations among the participants. This allowed them to share experiences, exchange ideas, and create a supportive network to boost their entrepreneurial journey.



Some of the KSCL staff who participated in the event.

"Accelerate MomPreneur" was a resounding success. Through such initiatives, KSCL continues to make a meaningful contribution to the growth and prosperity of women entrepreneurs.

AMCOS EQUIPPED



Kilombero Sugar Company Limited has reaffirmed its commitment to community development and conservation by actively participating in the implementation of the three-year SUSTAIN Eco project in the Kilombero Landscape. This significant partnership between African Wildlife Foundation (AWF) and International Union for Conservation of Nature (IUCN) emphasizes ecosystem stewardship for sustainability and growth and Kilombero Sugar Company Limited prides itself in being among implementing partners.

Being a key stakeholder in the implementation of this new project, KSCL was invited to the hand-over ceremony whereby 18 laptops were given to leaders of all 17 (Agricultural Marketing Cooperative Societies) AMCOS with 1 laptop being handed over to the umbrella AMCOS known as Umoja wa Vyama Vya Ushirika vya Wakulima wa Miwa Kilombero.

The decision to equip each AMCOS with a laptop was driven by valuable insights gathered during the previous SUSTAIN project, which highlighted the lack of

digital enablers hindering their efficiency.

With all AMCOS having email addresses since last year, communication with stakeholders has already witnessed significant improvement. Previously, emails were linked to leaders' phones, causing delays and difficulties in reaching them in case of phone damage, loss, or leader absence. However, with the provision of laptops, emails will now reach the AMCOS through this more reliable method of communication.

The laptops will also empower AMCOS to generate, save, and submit various data and reports in a timely manner, eliminating previous challenges of data accessibility and traceability. Additionally, the integration of the SBT App into the laptops ensures that any leader can conveniently access vital information from a single device.

We commend the SUSTAIN Eco project for this transformative step towards securing a sustainable future for the Kilombero Landscape and its invaluable wildlife and communities.



KSCL HOSTS GROUP LEADERSHIP DEVELOPMENT PROGRAMME (GLDP)

[!\[\]\(c3d993ca47bfe2a953c700506ce31fa0_img.jpg\) Continue reading | *Next Page*](#)

KSCL HOSTS GROUP LEADERSHIP DEVELOPMENT PROGRAMME (GLDP)



On 27 March Illovo Sugar Africa launched the 2023 Illovo Group Leadership Development Programme, a custom three-module programme that runs for 8 months.

At the end of June, Kilombero Sugar Company was honored to host a delegation of executives from South Africa, Malawi, Eswatini and Zambia. The visit provided a unique opportunity for on-site learning and demonstrated the power of best practice sharing.

The team got to visit the construction site of our expansion project as well as see the innovative agriculture processes in practice, underscoring our commitment to excellence. The trip also included interviews with inspiring local CEO's and a best practice visit to Coca-Cola Company.



KSCL's Commercial Head -Fimbo Butallah sharing a light moment with GLDP delegates.



GLDP delegates receiving briefing about progress of the KSCL Expansion Project.

KSCL HOSTS GROUP LEADERSHIP DEVELOPMENT PROGRAMME (GLDP)

The Illovo Group Leadership Development Programme marks a significant step in nurturing leadership excellence within the organization. These initiatives reflect our unwavering dedication to fostering leadership and collaboration for a thriving future in the sugar industry.



GLDP delegates listening to a presentation from KSCL staff about company's operations.



GLDP delegates during a site visit at the KSCL Expansion Project.



GLDP delegates during a site visit at the KSCL Expansion Project.



GLDP delegates during a site visit at the KSCL Expansion Project.

DIFFERENT PACKS, SAME TASTE



**KILOMBERO
SUGAR COMPANY**
AN ILLOVO SUGAR AFRICA COMPANY

FAREWELL TO OUR COMRADES – JOHN MASANJA & BRUNO DANIEL

In the month of July, Kilombero Sugar Company Limited (KSCL) bid farewell to two esteemed members of its team, Bruno Daniel and John Masanja, celebrating their years of dedicated service and invaluable contributions to the organization.



John Masanja, the Transport Workshop Manager in the Estate Support Department, officially retired from KSCL after 37 years of dedicated service. Throughout his illustrious career, John has been instrumental in driving continuous improvement through the implementation of best practices in workshops and maintenance.

His commitment to honesty, integrity, and accountability has been a guiding light for colleagues, and his exceptional leadership skills have inspired many. As John embarks on a well-deserved retirement, KSCL celebrates his remarkable career and extends heartfelt appreciation for his lasting impact on the company and its employees.

Bruno Daniel, who served as the HR Business Partner - Services and later as Business Affairs Manager, has been an integral part of KSCL's team. He played a crucial role in maintaining the company's License to Operate. While his departure leaves a void, KSCL takes pride in his outstanding performance.



KSCL extends its best wishes for continued success and fulfillment in their new chapters as well as future endeavors.

VALUES CAMPAIGN KICKS-OFF



INCLUSIVENESS



ACCOUNTABILITY



COMMITMENT



INTEGRITY



EMPOWERMENT

For a **Thriving Community**
that prospers well beyond our time

In early June, Kilombero Sugar Company (KSCL) launched its Core Values campaign, aiming to reinforce the significance of its values and foster a culture that embodies them.

Launching the campaign, the Managing Director Guy Williams expressed the importance of these values as the foundation of the company's operations and interactions with stakeholders.

The campaign focuses on its five core values: Commitment, Integrity, Accountability, Inclusiveness, and Empowerment. Each month, the spotlight will be on one of these values, as KSCL seeks to remind and encourage its employees to integrate these principles into their daily work and personal lives.

Through various communication channels, including printed materials, the company's Core Values will be prominently displayed, serving as constant reminders of the guiding principles that shape the organization. The goal is to create a cohesive culture where every employee understands the significance of these values and strives to embody them in their professional and personal conduct.

The Core Values campaign represents a significant step in KSC's journey towards becoming a more values-driven company. With commitment, integrity, accountability, inclusiveness, and empowerment at the forefront of its operations, KSCL aims to strengthen its position as a leader in the sugar industry while making a positive difference in the lives of its employees, stakeholders, and the communities it serves.



"BWANA SUKARI" SHINES AT THE 47TH DAR ES SALAAM INTERNATIONAL TRADE FAIR

[→ Continue reading | Next Page](#)

"BWANA SUKARI" SHINES AT THE 47TH DAR ES SALAAM INTERNATIONAL TRADE FAIR

Kilombero Sugar Company Limited (KSCL) proudly participated in the 47th Dar es Salaam International Trade Fair, captivating visitors with its "Bwana Sukari" brand. The prestigious trade fair, which took place at the Mwalimu Julius Nyerere grounds, offered KSCL a platform to showcase its quality sugar products available in various pre-packs as well as share exciting insights about its ongoing expansion project.



KSCL's Commercial Head - Fimbo Butallah (with a white shirt), in a group photo with some of the Company's employees.



Trade Marketing Manager Olympia Fraten (R) speaking to one of the pavilion attendants during the Saba Saba Trade Fair.

Our booth also proved to be an educational hub, as the company shared valuable details about the expansion project. Visitors were informed about the vast opportunities arising from the project, which aims to increase production capacity and enhance KSCL's contribution to the local economy.

During the event, KSCL's vibrant booth attracted a steady stream of visitors eager to experience the taste of "Bwana Sukari" sugar. The company's representatives were on hand to showcase the different sugar pre-packs emphasizing our dedication to produce and provide quality affordable sugar that is easily accessible by consumers. The positive feedback we received from visitors was incredibly encouraging, validating our commitment to delivering quality affordable sugar that is accessible to consumers in the market which we operate in.



An attendant talking to customers who visited the Company's pavilion during the Saba Saba Trade Fair.

"BWANA SUKARI" SHINES AT THE 47TH DAR ES SALAAM INTERNATIONAL TRADE FAIR



Amid the informative sessions, the KSCL booth brimmed with entertainment and excitement. Visitors had the chance to engage in entertaining games and competitions with attractive prizes up for grabs. The games not only brought joy to the participants but also showcased KSCL's commitment to engaging with our customers and general public.

As one of the leading sugar producers in Tanzania, KSCL remains dedicated to producing high quality sugar while fostering strong relationships with consumers and stakeholders. The company's presence at the trade fair has further solidified its position as a market leader and a catalyst for growth in the sugar industry.

A PRODUCT OF KILOMBERO SUGAR COMPANY



BIDHAA YA
KILOMBERO
SUGAR COMPANY

COMMERCIAL REVIEW SESSION



KSCL Managing Director Guy Williams addressing session participants.

On 13th July 2023, an important milestone was achieved at the Country Commercial Review (CCR) event held in Dar es Salaam, at our Dar es Salaam office. The session centered on showcasing the department's journey over the years, presenting current initiatives, and outlining action plans for future growth.

The session brought together key participants from the Commercial, Finance and HR Department, as well as the Managing Director, the Group team, and K4-Tax for a comprehensive review of the department's historic progress and development since 2017. The session was also attended by the Group commercial and logistics team, which added valuable insights and perspectives.

One of the highlights of the event was the successful presentation by the Tanzanian team, where they provided a concise history of the commercial department, along with detailed plans for new factory-K4 readiness. The CCR also fostered a strong sense of teamwork as various sections and the finance department collaborated intensively before and during the presentation



Country Commercial Review participants celebrating after the session.

COMMERCIAL REVIEW SESSION



Attendants listening to a presentation from André Lubbe- Group Commercial Director.

The in-depth review of strategies for achieving set commercial goals proved highly beneficial, enabling the team to identify opportunities for improvement and optimization of their approaches.

The Country Commercial Review (CCR) was executed with great success, serving as a platform to celebrate achievements, enhance collaboration, and chart a promising path for the department's future growth. The dedication and hard work put into this event exemplify the commitment of the team to achieve excellence in their endeavors.



KSCL Managing Director Guy Williams addressing session participants. Listening on is KSCL's Commercial Head -Fimbo Butallah (behind) and Trade Marketing Manager - Olympia Fraten (left).



KSCL's Commercial Head -Fimbo Butallah presenting during the Country Commercial Review.



Representative from Illovo Group were among the participants of the Country Commercial Review.

KSC JOINS OTHER STAKEHOLDERS TO COMMEMORATE NELSON MANDELA DAY

On the 18th of July the company celebrated Nelson Mandela Day dedicated to paying tribute to the former President Mandela for his tireless 67 years of struggle for social justice and equality.

The event was organized by the South African High Commission and the United Nations Information Centre. It was graced by the presence of Ms. Noluthando Mayende Malepe, the esteemed South African High Commissioner, who delivered heartfelt remarks during the celebration. She emphasized that children held a special place in Nelson Mandela's heart, and it was heartwarming to witness African countries coming together to honor his legacy by extending a helping hand to children in need.



KSC JOINS OTHER STAKEHOLDERS TO COMMEMORATE NELSON MANDELA DAY

The event saw KSCL's Route to Consumer Manager, Johannes Rugalema, represent the company at a brief yet impactful ceremony held at the Muhimbili Children's Cancer Hospital. Distinguished guests, including Ambassadors from various African countries in Tanzania, development partners and Muhimbili officials gathered to support the incredible work being done by Tumaini La Maisha in assisting children battling cancer at the Muhimbili National Hospital.



As part of the commemoration, the participants engaged in a variety of activities aimed at making a positive impact on the lives of children in need. One of the highlights was a tree-planting initiative, symbolizing growth, hope, and a commitment to a greener, more sustainable future.



Additionally, delegates had the privilege of visiting the Skills Center at the Muhimbili Children's Cancer Hospital. The center serves as a safe space where mothers of children undergoing cancer treatment can learn valuable skills, empowering them to support their families and communities while their children receive medical care.

Nelson Mandela International Day, celebrated annually on July 18th, encourages people worldwide to take part in voluntary service to promote positive change within their communities and beyond. It is a day to reflect on Mandela's values of compassion, forgiveness, and social justice, inspiring individuals to embrace their collective responsibility in creating a better world for all.



NEW MOROGORO RC VISITS KILOMBERO SUGAR COMPANY

[→ Continue reading | Next Page](#)

NEW MOROGORO RC VISITS KSCL

On July 22, 2023, the Regional Commissioner for Morogoro Hon. Adam Malima on July 22, 2023, conducted a visit to the estate and was received by the company's management team led by the Managing Director - Guy Williams.

He was accompanied by the District Commissioner for Kilombero - Hon. Dunstan Kyobya, Chairman of the Board of Directors of the Sugar Board of Tanzania - Filbert Mponzi, the Director-General of the Sugar Board of Tanzania - Prof. Kenneth Bengesi, along with the Regional and District Security Committee.

This is the first visit of Hon. Malima to the estate since he was appointed to the position, and it has provided a valuable opportunity for the company to brief him on company operations including the Expansion Project.

During his visit to the Company estate, the Regional Commissioner commended Management of the Company for its cooperation with the government in contributing to the country's revenue and providing employment opportunities to surrounding communities.

Furthermore, Commissioner Malima urged sugarcane farmers to start preparing to utilize opportunities presented by the company's expansion project including employing best farming practices to improve their yields.



KSCL Managing Director - Guy Williams (2nd L) led the Morogoro Regional Commissioner Hon. Adam Malima (2nd R) and accompanying guests on a tour of the estate.



NEW MOROGORO RC VISITS KSCL



KSCL Managing Director - Guy Williams (R) showing ready-packaged sugar to the Morogoro Regional Commissioner Hon. Adam Malima during a tour of production facilities.

"Our government, led by Her Excellency President Samia Suluhu Hassan, is well-prepared to ensure sugarcane growers increase their production to meet the demands of the K4 mill by providing them with training on best farming practices and facilitating access to inputs in collaboration with the Tanzania Sugar Board," said Malima.

Managing Director of Kilombero Sugar Company - Guy Williams thanked the Government for creating an enabling environment which triggered the decision to expand its milling capacity which is in line with the country's agenda of making the country self-sufficient in sugar production by 2025. He urged the Government to continue protecting the sugar industry to ensure its Sustainability.



On the other hand, Fimbo Butallah, the Commercial Head at Kilombero Sugar Company, said the company's introduction of sugar pre-packed in various sizes enables citizens to buy sugar according to their needs. Butallah encouraged the use of pre-packs and urged the public to use products that adhere to strict health and safety standards to protect consumer's health.

Kilombero Sugar Company is owned by Illovo - 75% and 25% by the Tanzanian Government, the Kilombero Sugar Company expects to more than double its sugar production capacity once the expansion is completed in the year 2024. The Expansion project is an important step towards increasing sugar production capacity and enhancing economic growth in the region.



KSCL's Commercial Head - Fimbo Butallah briefing the Morogoro Regional Commissioner Hon. Adam Malima during a tour of production facilities.



NANE-NANE EXHIBITIONS

Kilombero Sugar Company Limited (KSCL) alongside other sugar stakeholders such as National Sugar Institute (NSI), Sugar Board of Tanzania (SBT) TARI-KIBAHA and other sugar producers, participated in the National Nane-Nane Exhibition, which took place in Mbeya regions as well as the Eastern Zone exhibitions which are normally held in Morogoro. The national exhibitions were opened on August 1, with the Guest of Honor at the official opening being the Vice President, Hon. Philip Isdory Mpango.

These celebrations, under the theme "Youth and Women: The Strong Foundation of a Sustainable Food System," concluded on August 8, with the presence of President Samia Suluhu Hassan.



KSCL's Commercial Head Fimbo Butallah (L) with the Pwani Regional Commissioner Abubakar Kunenge (R) and SBT Director of Regulatory Services - Lusomyo Buzingo (C)

During the events, KSCL seized the opportunity to interact with various stakeholders including the general public. The company showcased its products available in various pre-packs including the newly launched *Kitamtam*, engaged in discussions on potential collaborations with strategic players, and highlighted various opportunities for locals arising from the expansion project.



KSCL Maintenance Foreman - Sugilo Sugilo briefing former Prime Minister Mizengo Pinda (2nd-R) and Morogoro Regional Commissioner Adam Malima (R) on Company's activities.



Morogoro Regional Commissioner Adam Malima showing a pack of Bwana Sukari to Tanga Regional Commissioner Waziri Kindamba during a visit to KSCL's booth

These opportunities are expected to have significant economic benefits for local farmers and entrepreneurs, contributing to the improvement of their livelihoods. The platform also provided the company to enhance its brand awareness as well as position itself as a pocket of excellence in sugarcane husbandry and sugar manufacturing.

This year's Nane Nane celebrations were part of the Africa Food Systems 2023 Summit, scheduled to take place from September 5 to 8 in Dar es Salaam. The summit is expected to be hosted by H.E. Samia Suluhu Hassan, the President of the United Republic of Tanzania.

MINISTER KIJAJI'S FIRST VISIT TO KSCL



On August 10, 2023, the Minister of Industry and Trade, Hon. Dr. Ashatu Kijaji, visited the Estate accompanied by the Regional Commissioner for Morogoro, Hon. Adam Kighoma Malima, and the Leadership of Kilombero District.

This tour marks Minister Kijaji's first visit to the factory, where she had the opportunity to witness production of sugar and Ethanol at the existing mills as well as see the progress of the expansion project, which is currently at 60% completion.

The Minister stated that the country has over five large sugar-producers but Kilombero Sugar Company accounts for 26 percent of the total sugar production in the country. Hon. Kijaji applauded the company for the good work and investment into the expansion project which will further position the company as the largest sugar producer in the country and in the East African region.



MINISTER KIJAJI'S FIRST VISIT TO KSCL

The Regional Commissioner for Morogoro, Hon. Adam Malima, praised the strategies implemented by the factory's management, including providing education to farmers through extension officers to improve yields among Kilombero sugarcane growers.

Management expresses gratitude to the Government of the United Republic of Tanzania through the Ministry of Industry and Trade for creating an enabling environment for investment, which enabled the Company to invest in the expansion project.

The project is expected to be completed by July 2024 and aims to contribute to the government's agenda of sugar self-sufficiency in the country.



QUALITY SUGAR AT PRICES YOU CAN AFFORD



KILOMBERO SUGAR COMPANY
AN ILLOVO SUGAR AFRICA COMPANY



DID YOU KNOW?

Sugar has been produced and used for thousands of years.

The process of producing sugar has evolved significantly over time, leading to the wide variety of sugar products available today, including granulated sugar, powdered sugar, brown sugar, and more.

Sugar plays a crucial role in culinary arts, baking, and various food and beverage industries, adding sweetness and flavor to a wide range of dishes and products.

What topics would you like to see in our next edition?

Share your feedback by sending your email to:
corporatecommunications@illovo.co.tz



CONTACT US:

P.O.Box 50, Kidatu
Morogoro, Tanzania

+255 232 626 011
kscl.info@illovo.co.tz
www.kilombersugar.co.tz



BIDHAA YA
KILOMBERO
SUGAR COMPANY