

KILOMBERO
SUGAR COMPANY
AN ILOVO SUGAR AFRICA COMPANY



KSCL
NEWSLETTER

SEPTEMBER 2022

CONTENT

Message from the MD	02
Expansion Update	03
World Nurses Day Commemorations	03
Best Worker 2022	04
May Day Celebrations	05
KSCL and FSDT visit to TAMISEMI Dodoma	05
Hon. Shigela visits Kilombero	06
The First Burn	06
First Crush	07
Environmental, Social, and Governance Visit	07
DC – Kilosa Launches 2022/23 Crushing season	08
Regional Cooperative Development Forum	08
Farewell to Hans Veenstra and appointment of Pierre	09
KSCL staff appointed to the Rufiji Basin Water Board	09
Appointment of New HR Head following Beda's Retirement	10
Sharing our Best Practices with other Companies/TANESCO Officials Visit	10
Good Neighborhood	11
Conclusion of Wage Negotiation and CBA	11
Saba Saba Exhibitions	12
REPOA and Ministry of Industry Officials visit the Estate	12
NEMC Visit	13
ABF Execs Impressed With Investment	13
Sugar Stakeholders Win at Nane Nane	14
Bashe Meets Kilombero Sugar Growers	15
Making Sense of Sugar	16

MESSAGE FROM THE MD



Welcome to our Fifth Edition of the KSCL Newsletter, keeping you informed of the business progress, key projects, safety issues, key engagements and events undertaken from in and outside our company including key business highlights for 2022.

I would like to highlight the following key issues:

Safety

Factory overhaul was successfully concluded on 16th May 2022 for K1 factory and 25th May for K2 factory, a week ahead of the new production season 2022/2023 and more importantly with no lost time injuries – well done!.

In order to create further awareness on the physical as well as mental wellbeing of our employees, various health awareness sessions have been conducted by our Medical facility. The sessions included awareness on blood pressure and mental health which is now a major challenge to employees.

Employees were also encouraged to live a healthy lifestyle by ensuring that they eat healthy, do exercises as well as seek medical attention where necessary.

Employees are reminded to seek medical advice whenever one feels unwell/ill by calling the hospital emergency number: **+255 784 386 255**.

Business Update

The 2022/23 production season commenced on 19th May and 27th May for the K1 and K2 Mill respectively.

The target for this season is to crush a total of 1,275,000 tons of cane. 625,000 tons from Kilombero Estate Agriculture (KEA) and 650,000 tons from the Kilombero Growers. Due to a very dry 12 months, KEA crop is lower than normal, but hopefully with improved crop management and effective water application, KEA maybe able to beat its target of 625,000 tons

The budgeted sugar production for the season is 126,161 tons, with the sucrose target of 12.10% for both KEA and the Growers. As at 2nd September 2022 the total cane crushed amounted to 530,075 tones (41.5%). Out of which 241,605.63 tones have been delivered by Kilombero Growers and 288,469.37 tones by the KEA.

The total sugar packed as at 2nd September 2022 is 53,127.59 tons. To date we are ahead of our targeted sugar make due to dry weather and excellent factory performance in both crush rate and sugar recoveries. This good factory performance has also been made possible by the steady cane supply from both Growers and KEA with lower Burn-to-crush hours than budgeted, leading to high quality cane delivered to the factories.

We continue to see a steady increase in demand for Bwana Sukari prepacks driven by our availability in the market along with strong brand campaigns. The gap sugar of 5,000 tones which the Company was permitted to import from Uganda and was all imported in the month of May 2022, and of which, all was sold by end of June 2022.

Various commercial initiatives are ongoing in order to meet the consumer needs. An upcoming project to meet affordability of our sugar to low-income consumers, is "Project Mini". The Project will produce a 50 grams packet which will be sold at TZS 200 per packet. This new small pack size will be launched in market later this year.

The 2022 annual maintenance season for IDTL was completed towards the end of May 2022 as per plan – also with no injuries – well done! However, a delay in starting operations was experienced due to unavailability of molasses for processing. The start-up date after off-crop was planned to be on 01 June 2022, but was delayed up to 10th June 2022 in order to allow for the sugar factories to produce molasses. The delay has slightly impacted the production figures to a little behind our target. Nevertheless, I am sure that the IDTL team will still meet the target. The budgeted production for this year is 14,202kL of Extra Neutral Alcohol(ENA) and actual production of 5,326kL (37.5%) ENA has been achieved as of 31st August 2022.

I call upon all employees together with our growers to work collaboratively so that we can achieve a stellar performance.

Guy Williams
COUNTRY MANAGING DIRECTOR

EXPANSION UPDATE

It gives us great pleasure to inform you that progress on the Expansion project is picking up now since ending of the rainy season.

The project is being executed under two contracts; the first is off-shore which entails fabrication of a large amount of heavy equipment and will be transported once completed. The second contract is the onsite, which involves construction of the new K4 factory on the company's premises.

A lot of work which is currently taking place is underground work which entails setting up of the foundation. Once that is completed, then the actual structure will be raised.

The Kilombero Sugar Company team has worked tirelessly over the last year in kick-starting the expansion project. To-date, the expansion project has reached 23 percent.



Aerial footage of the K4 Expansion Site



K4 Expansion Site

WORLD NURSES DAY COMMEMORATIONS



On the 12 May, 2022 the Company organized a one-day free health screening exercise where more than 800 residents living within and around the estate were able to benefit from the exercise.

The event was held in celebration of the International Nurses Day which is celebrated annually across the world on 12th May where this year's theme is "Nurses: A Voice to Lead – Invest in Nursing and Respect Rights to Secure Global Health".

With the large support of nurses and staff from the company's own health center which is located within the estate, KSCL was able to offer cervical and breast cancer screening as well as screening for hypertension and health education on prevention and management of hypertension.

Other services offered during the one-day event included Voluntary Male Medical Circumcision (VMMC), HIV testing and counselling and family planning services such as implants, IUCD and Condoms.

Speaking during the event, Dr. George Komba said "We recognize the contributions that nurses make to society; hence we organized a number of activities to celebrate this special day with the nurses and showcase their importance in the community through this important health screening exercise."

In light of ongoing epidemics and other infectious diseases, the company used the day to also offer education and vaccination on Covid-19 and Human Papillomavirus (HPV) vaccine to girls below 14 years, which helps in preventing cervical cancer.

BEST WORKER 2022

As it has been our norm, every May each year, Kilombero Sugar Company conducts best worker nomination with a view of recognizing employees with exemplary performance.

Employees who emerge as the best workers are awarded various tokens depending on the level they have been nominated.

The best worker award categorizes employees at Estate, District, Regional and National levels.

This year, the nominations at the estate level are as follows:

Estate Agriculture department:



HR, Corporate Affairs & Business Improvement departments:



Commercial department:



Kilombero Growers department:



Manufacturing department:



IDTL Factory



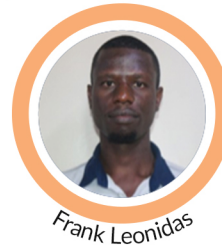
At the District Level, **Watwigo Mwita** was nominated from the Finance department. At the Regional Level, **Frank Leonidas** was nominated from the Manufacturing department, and at the National level, **Oswald Komba** was nominated from the Estate Support Services department.

We congratulate all the best workers for their nominations and encourage all other employees to learn from them in order to improve our performance.

District Level



Regional Level



National level



MAY DAY CELEBRATIONS

Kilombero Sugar Company Limited (KSCL) took part in the regional International Workers Day (May Day) celebrations held in Mikumi Town where Hon. Martine Shigela, the then Regional Commissioner for Morogoro, was the guest of honor.

This year's theme was "Better Salaries and Benefits for Workers, is our outcry, 'kazi iendelee'.

In his speech, Hon. Martine Shigella insisted on the need for employers to ensure they create conducive environment for workers to execute their responsibilities including better working condition, working tools, learning and development opportunities, to mention a few.

On the other hand, he urged employees from both the public and private sectors to ensure they work diligently and observe integrity in execution of their duties, with a view of adding value in their work.

Best workers from KSCL at District and Regional Level were present and received their awards from the guest of honor.

In an interview with news reporter, Frank Leonidas, on behalf of other best workers said that, they are happy with the nomination and that they will put more efforts to add value in company's operations and ensure that they are nominated again.



May Day celebrations

Hon. Martine Shigella handing Bwana Sukari T-shirts to poem singers during May Day Celebrations held at Mikumi

KSCL tent during May Day2022 Celebrations held at Mikumi

KSCL AND FSDT VISIT TO TAMISEMI DODOMA

Following on the site visit made by Financial Sector Deepening Trust (FSDT) to further understand our business and in particular our relation with the Kilombero Growers; an engagement was held with Permanent Secretary for TAMISEMI Prof. Riziki Shemdoo and Deputy Permanent Secretary Ministry of Finance and Planning (MoFP) Mr. Lawrence Mafuru early in the year.

In attendance was our Corporate Affairs Head Mr. Ephraim Mafuru, Ms. Pamela Shao - CEO for FSDT and Prof. Andrew Temu consultant for FSDT.

The objective of the engagement was to present to the team the Kilombero story and how we can collaborate with other players such as FSDT and the local government authorities within the valley to support the growers.

The meeting went very well with the Deputy PS - TAMISEMI being very impressed with the expansion initiatives being carried out by KSCL. Both PS TAMISEMI and PS MoFP offered to support our initiatives for the sustainability of the growers and the business in general.



HON. SHIGELA VISITS KILOMBERO

On 23rd - 25th April 2022, the then Regional Commissioner for Morogoro, Hon. Martine Shigela paid a visit to Kilombero and Kilosa Districts in Ruaha and Kidatu wards. The visit started on 23rd April 2022 where he met with growers and contractors at the National Sugar Institute (NSI) to hear and clarify their concerns, followed by a public meeting at Ruaha village on 24th April 2022.

Various stakeholders attended the meeting, including the Tanzania Agriculture Research Institute (TARI), the Sugar Board of Tanzania (SBT), and Kilombero Sugar Company Limited (KSCL).

In his speech, Hon. Shigella called for CSR projects that have a significant contribution to the surrounding communities. He advised that request and plans from surrounding communities be properly coordinated and target key projects that have huge impact on a wider community, as opposed to the current practice of communities bringing in requests for small projects without proper coordination.



On 25th April 2022, Hon. Shigella held an internal meeting with KSCL Management and growers' leaders with a view of having a joint discussion and action planning for issues that were raised. The meeting was instrumental in formulation of plan of action that set responsibilities for each stakeholder to execute, that is; SBT, Registrar of Cooperatives, Regional Commissioner's Office, growers, and contractors.

It is expected that the action items agreed upon will be helpful in ensuring that the 2022/2023 season run in smoothly, helping growers to attain commercial value of their cane.

THE FIRST BURN

The start of 2022/2023 season was marked by a ceremonial First Burn event, which was graced by the Managing Director, Guy Williams.

Employees from various departments were present in the event as well as various religious leaders who were invited to say prayers for a safe and prosperous season.

Before welcoming the Managing Director to officiate the event, Juma Sheiza - Crop Removal Manager, stressed on safety precautions during the exercise, saying that despite the burn team having an experience of over 15 years, the exercise remains risky and great care always needs to be taken.



Imani Sanga (SHERQ Officer - Agriculture, HR - Estate Support) giving a safety talk before the first burn



Religious leaders present during the first crush Fr. Plasdus Mawanga of Roman Catholic (first left), Pst. Philip Senyangwa of Anglican(Middle) and Imam Dushamu Mavuma of K1 Mosque

In a safety briefing prior to the first burn, Imani Sanga Safety, Health, Environment, Risk & Quality (SHERQ) Officer, urged all employees to be vigilant and ensure that they observe all safety standards throughout the 2022/2023 season. He emphasized that the fatal safety incidents that occurred in the 2021/2022 season, which led to the loss of lives of our colleagues, could have been avoided if everyone observed the existing safety procedures.

Imani further reminded attendees that one of the biggest safety risks is when people perform the same work for a long time. This is because it is easy to fall into complacency and the tendency of ignoring some safety procedures on grounds of experience and the 'business as usual' trap.

FIRST CRUSH

K1 factory began its first crush on 19th May 2022, one week ahead of plan by holding a first crush launch ceremony where employees from different departments as well as our service providers, Unitrans were present.

In an opening speech, Jimmy Mwakyami, Factory Manager – K1 said that the Factory Team has put their effort into completing off-crop maintenance which has enabled us to commission the factory one week ahead of the schedule for commencing the production for the 2022/2023 season.



In his speech to the employees who attended, KSCL's Managing Director – Mr. Guy Williams commended the K1 Factory Team for their commitment and effort in completing maintenance ahead of the schedule as well as doing so safely. He insisted on the need for every employee to constantly observe safety procedures to ensure that everyone is safe by the end of the season.



Baldwin Muzondo, Business Improvement Head (first left in the middle) leading prayers during K1 first crush ceremony



KSCL MD Guy Williams (left) and Jimmy Mwakyami (Factory Manager – K1) launching K1 first crush

ENVIRONMENTAL, SOCIAL, AND GOVERNANCE VISIT

Corporate Citizenship, an entity from the United Kingdom, visited our Estate to conduct an impact assessment on the business as well as the upcoming expansion project to ensure sustainability in how the company operates.

Corporate Citizenship met with a number of stakeholders, including AMCOS, employees, the Estate Support Department, a women's group, HR, the Finance Head, and the Managing Director.

The goal of all engagements was to assess the business's impact on the community and the country at large, as well as to provide an opportunity for the company to improve in areas where it falls short, in order to improve the socio-economic livelihood of all stakeholders and continue to operate sustainably.



DC – KILOSA LAUNCHES 2022/23 CRUSHING SEASON

The District Commissioner for Kilosa Hon. Majid Mwanga visited the Estate on 27th May 2022. The main objective of his visit was to launch the new crushing season 2022/23.

Prior to the launch, the DC received a brief season progress report and a tour of K4 expansion project site.

In presenting a brief season progress report, Ms. Willa Haonga - Communications and Stakeholder Relations Manager, mentioned that cane crushed for the 2021/2022 season was 1,268,369 and sugar produced was 132,076 tons of which 666,012 tons of cane came from Kilombero Growers being 6% higher than the original target. Willa further mentioned that the target for 2022/2023 season is to crush 1,275,000 tons of cane, whereby 650,000 tons is expected to be supplied by Kilombero Growers.

At the K4 expansion project site, Eng. Dennis Mdoe (Project Execution Manager) informed Hon. Majid Mwanga that the project is executed in two-parts; off shore and onshore. The onshore involves earth works and basement on which equipment completed under the offshore will be placed. He further mentioned that offshore contract is being carried out in four different countries including Spain, Brazil, India and South Africa.

Ephraim Mafuru - Corporate Affairs Head mentioned that both MCP and KG have worked hard to deliver 132,076 tons of sugar in the previous season and that the same cooperation is required to achieve this season's target.

On his speech, Hon. Majid, commended the efforts taken by the company in expanding production with a view to bridge the sugar gap in the country. He further mentioned that the Government has high expectations on the company to ensure sugar is available in the market, hence employees should know that their roles are key in supporting the Government.



DC for Kilosa, Hon. Majid Mwanga throwing first cane signifying the launch of the new crushing season



Eng. Robert Mkumbo, Maintenance Manager K2 (first right in middle) briefing Hon. Majid Mwanga, DC for Kilosa District



Ephraim Mafuru, Corporate Affairs Head (first right) explaining about K4 expansion project before Hon. Majid Mwanga - DC for Kilosa District

REGIONAL COOPERATIVE DEVELOPMENT FORUM

KSCL, together with other stakeholders, attended the Regional Cooperative Development Forum, which was held in Morogoro Region from the 20th to the 21st of June.

The forum's objective was to discuss and present the opportunities, challenges, and success stories for the development of Cooperative Societies in the region. Hon. Martine Shigela, the then Regional Commissioner for Morogoro, graced the Forum on June 21, 2022.

KSCL can proudly state that it has constituted significantly to the geographical location of cooperative societies with the valley, an exercise which has taken several years. The cooperatives began operating within geographical zones for the first time in the 2021/22 season.

As we head towards the expansion project, cooperative societies will need to increase their operational efficiency, including the best management practices in farming and haulage.

We hope that the newly restructured Estate Grower Department, which now comprises five grower support managers, one grower optimization manager, and twenty-one grower support officers, will provide the Cooperatives with much-needed assistance in improving their efficiencies.

The issues raised in the regional forum will then be discussed during World Cooperative Day, which will be held in Tabora Region from June 28th to July 2nd, 2022.



FAREWELL TO HANS VEENSTRA AND APPOINTMENT OF PIERRE

On the 31st of May 2022, the KSCL Team bid farewell to Mr. Hans Veenstra who was the Head of the Grower Agriculture Department from 2018.

Hans will be remembered for his significant contribution to the transformation of the Growers into geographical zones. This agenda was part of KSCL's long outstanding advice to the Cooperatives, and its implementation only commenced in the 2021/22 production season. The change has positively impacted harvesting schedules and more specifically, the burn-to-crush time frame.

Moreover, Hans also contributed to the restructuring of the Grower Agriculture Department which is now a fully-fledged Department consisting of five (5) growers' support Managers, one (1) Grower Optimisation Manager, a liaison specialist and twenty-one (21) Grower Support Officers.



A few of the Kilombero Grower leaders who joined KSCL Team in bidding farewell to Hans

The objective of the enhancement of the department is to closely support our growers to ensure efficient and effective productivity, especially with the upcoming expansion project.

We thank Hans for his great contribution to the team and wish him and his family well in his retirement.

Consequently, Mr. Pierre Redinger has been appointed as the new Grower Agriculture Head effective from 31st May 2022.

Prior to joining Kilombero, Pierre worked with Transmara Sugar Company in Kenya for six years as the Head of Agriculture and Agricultural Executive Officer, leading the successful Grower sugar cane expansion from 5,000 ha to 23,000 ha. Pierre has 26 years of working experience in the agriculture sector.

With his vast experience, we are confident that Pierre will provide the required leadership to enhance grower productivity and efficiency.

We welcome Pierre to the KSCL team and wish him all the best in his new role.



Pierre Redinger- Grower Agriculture Head

KSCL STAFF APPOINTED TO THE RUFJI BASIN WATER BOARD



Richard Ndongwe

We are delighted to share news that Eng. Richard Ndongwe from our Estate Agriculture Department has been appointed to the Rufiji Basin Water Board for a three-year term beginning April 11, 2022 and ending April 10, 2025.

Richard has been appointed by the Minister of Water to represent the private sector.

Richard has worked with the company for about 32 years in various capacities and now works as an Irrigation Engineer. This appointment is a testament to his breadth of expertise and the trust that the government, through the Ministry of Water, and other stakeholders have in his contribution.

KSCL is happy and sure that the private sector will be strongly represented. Please join us in congratulating Eng. Richard on his appointment and wishing him success in this role.

APPOINTMENT OF NEW HR HEAD FOLLOWING BEDA'S RETIREMENT

Mr Beda Chacha, who has been the Human Resources Head for several years, officially retired on June 17, 2022. Beda made important contributions to the Human Resources Department's structure throughout his tenure.

In his farewell message to the KSCL team, Beda reminded all employees to prepare for their retirement well ahead of time, which is very important to avoid future inconveniences.

Wishing Beda all the best in his retirement.



Mr. Beda Chacha

Following Beda's retirement, Ms. Diana Mwakitwange has been appointed as the new Human Resources Head. Ms. Diana has more than 20 years of experience in Human Resources and has worked in several notable entities including Tanga Cement and Serengeti Breweries.

Diana will be responsible in leading the HR function, its strategies and plans for meeting the business objectives.

We welcome Diana to the KSCL team and wish her the best in executing her duties.



Ms. Diana Mwakitwange

SHARING OUR BEST PRACTICES WITH OTHER COMPANIES/ TANESCO OFFICIALS VISIT

TANESCO Head Office officials visited the Estate to learn about our insurance plans, programs, and overall insurance administration in order to benchmark their insurance practices.

Neema Chihoma, the then Financial Analyst and Custodian of insurance management in the company welcomed TANESCO visitors and explained in detail what we have in terms of insurance plans, which included Group Personal Accident which provide cover for employees all the time (24/7). Motor Insurance covering vehicles and motorcycles and Business All Risk which cover machineries and equipment all provided by Jubilee Insurance.



Neema Chihoma, Financial Analyst (first left) sharing KSCL's best practices with visitors from TANESCO Head Office

She further described the advantages of having insurance plans in place, including the provision of a cover in times of need to cushion the impact that individuals and businesses suffer as a result of disasters that may occur in the course of carrying out our day-to-day tasks.

The team was indeed very appreciative of the company's willingness to allow them carryout the study visit which was very fruitful.



GOOD NEIGHBORHOOD

As a responsible corporate citizen, the company has engaged with its neighboring communities and institutions, collaborating on a variety of issues as deemed essential.

The company often uses its farm managers to engage with neighboring villages for discussion on topics of mutual interest.

To maintain the spirit of mutual cooperation, the administrations of Sekeseke and Ruaha Farms met with Nyange Village to discuss various issues concerning both parties.

During the meeting, Peter Yambi, Farm Manager - Sekeseke, raised the issue of villagers grazing their cows by the farms, which causes cows to get to the farms and cause damage.



The Village explained that they have allocated a specific area for keeping animals and that they will deal with villagers who do not abide to the agreed terms.

The Village commended the farm administration and management in general for attending neighboring meetings, which help to resolve issues at earlier stages and help to align both parties.

Present in the meeting was Dominick Kitambo (Acting Farm Manager -), Rosemary Mushi, Farm Manager – Ruaha, and Bruno Daniel, Business Affairs Manager.

CONCLUSION OF WAGE NEGOTIATION AND CBA

Wage negotiations for the financial year 2022/23 and the Collective Bargaining agreements were finally concluded after a lengthy discussion between KSCL Management and Workers' representatives.

The negotiations began on May 24th and were completed on June 14th, 2022. The wage negotiations were finished by agreeing on a 4.5 percent pay rise for all Union employees (A1-A3 grades). The pay raise will take effect in June 2022, and the Collective Bargaining Agreement signed in 2003 has been updated and will be signed after administrative matters are completed.

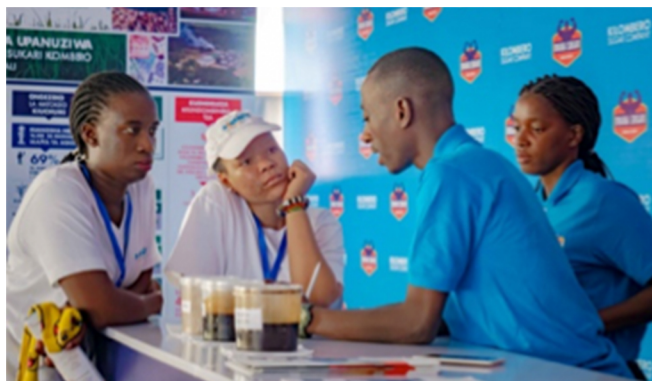
Management would like to thank everyone who contributed to the process and the successful conclusion of the negotiations!

SABA SABA EXHIBITIONS

Saba Saba is a popular national holiday in Tanzania, celebrated every 7th July. Many know this day as a day that marks the peak of the Dar es Salaam International Trade Fair (DITF) which often runs from late-June to mid-July each year with its peak celebrations on 7th July.

The event provides for some interesting shopping and sightseeing for individuals and family, while businesses are able to explore opportunities and market their products and services.

This day however, holds a much bigger significance and represents one of the crucial histories of the country. On July 7th, 1954 the Tanganyika African National Union (TANU) was founded.



TANU would go on to play an important role in the journey to independence and the merging of Tanganyika and Zanzibar to create the United Republic of Tanzania in 1964.

To join the rest of Tanzanians in celebrating this rich history, KSCL participated in the 46th DITF. The KSCL Team was on the ground to showcase our products and engage with our customers.

The Vice President of the United Republic of Tanzania, Dr. Phillip Mpango closed the trade fair and presented awards to the winners at Saba Saba, and Kilombero Sugar Company Limited took home a trophy for being Second Runner-up Big Employer for the year 2021/2022.

The fair was a rewarding experience; it gave our customers the opportunity to directly engage with our brand which is used in many people's homes, and the company a chance to collect useful feedback.

REPOA AND MINISTRY OF INDUSTRY OFFICIALS VISIT THE ESTATE

Dr. Donald Mmari CEO for Research on Policy Alleviation (REPOA) together with Mr. Ahmed both from visited the Estate on the 27th June 2022. They were accompanied by Ms. Magreth Warioba Principle Officer from the Ministry of Investment and Industry, Trade.

The key objective of the visit was to understand policy constraints which the Company faces in its day to day operations so as to advise the Ministry on the best policy reforms than can help our company and others within the industry to enhance productive capacities.

Dr. Donald Mmari who had visited the Estate almost 10 years ago for a study on how the AMCOS operate, was happy to hear that the Growers for the second season have started operating in geographically located zones following REPOA's recommendation to the AMCOS within the valley to operate in such a manner to enable them conduct sustainable businesses.

During discussions, the team urged KSCL to regularly engage with the Ministry to strengthen ties but also get the support needed to enable smooth business operating environment.



NEMC VISIT

On the 29th June 2022, the National Environmental Management Council (NEMC) visited the Estate. The aim of the visit was to check our overall compliance to environmental management practices as reflected and committed in our annual environmental audit submitted to NEMC.



The NEMC team comprised of Zonal Manager Ms. Amina Kibola and three Inspectors; Eng. Jane, Shedrack and Jackson. Areas visited were; Herbicide Mixing Plant (HMP), Asbestos Handling Area (workshop), Oil Separator room (workshop), recycling area (Parks & Garden Offices), IDTL and boiler K2.



Upon completing the visit, they highlighted a few areas that need improvement such as asbestos destruction area. NEMC team commended the company for upholding environmental management best practices and encouraged the company to continue complying but also encouraged the company to welcome other players in the industry to come and learn our best practices.

ABF EXECS IMPRESSED WITH INVESTMENT

Paul Kenwood - Incoming Chief Executive - ABS, Charles Noble - Chief Financial Officers - ABF and Allan Drew Treasurer ABF made a three day visit to KSCL commencing on the 4th July 2022.

The main objective of the visit was to better understand KSCL's as a business including the ongoing expansion Project.



During the visit, they conducted a tour of the estate agriculture where they got an overview of improvements being carried out in our seedling, introduction of new technology in irrigation as well as harvesting which is intended to mitigate the impact of climate change for sustainability of our business.

The visitors also got to understand initiatives being carried out by the company for the growers through our Grower Agriculture Department. Such initiatives being carried out is the enhancement of our Grower Agriculture Department which is intended to provide close support to our growers with the main objective of instilling best management practices in their farming for improved productivity and also enhancement of efficiencies. The visitors also conducted a trade visit of the Ruaha market where they got to see how our product - Bwana sukari is being sold in one of our many local markets.



The visitors were very much impressed with the work and ongoing initiatives being carried out by the company, and are very much excited about the upcoming expansion project which will have a significant impact to the business but also to the surrounding community.



SUGAR STAKEHOLDERS WIN AT NANE NANE

Sugar Stakeholders have emerged winners for the Eastern Zone regions (Dar es Salaam, Pwani, Tanga and Morogoro) at the Nane Nane exhibitions held in Morogoro Municipality at the Julius Nyerere Grounds in Nane nane Area.



Sugar stakeholders including Kilombero Sugar Company Limited (KSCL), Mtibwa Sugar, Tanzania Agricultural Research Institute (TARI) - Kibaha, Sugar Industry Development Trust Fund (SIDTF) and National Sugar Institute (NSI) jointly participated in the exhibitions under the Sugar Board of Tanzania.

The platform provided us with an opportunity to:



share with the general public efficient sugarcane husbandry practices and modern agricultural and sugar manufacturing technologies.



Increase awareness and strengthen Kilombero Sugar Company Brand and our products (Sugar, ENA, TA & Molasses);



Increase sugar sales through promoting/Marketing Bwana Sukari brand

Management congratulates everyone who made this win possible and special thanks to the team that represented the company at the exhibitions.

Farmers' Day Exhibitions, popularly known as Nane Nane is an annual event held from August 1st – 8th August 2022 where farmers and other agriculture stakeholders in Tanzania share experiences and knowledge.



BASHE MEETS KILOMBERO SUGAR GROWERS

Minister of Agriculture, Hon. Hussein Bashe held a public meeting with Kilombero sugarcane growers to hear their challenges in a bid to ensure growers benefit from sugarcane farming.



In the meeting, the Minister addressed various grower concerns including irrigation infrastructure, grower registration, access to capital as well as fertilizer costs where he informed of the government's move to subsidize fertilizers.

The Minister urged stakeholders to work together on improving various issues such as cane supply agreement, joint input procurement, growers' access to quality seeds and education on best farming practices.

Following a brief discussion with the Kilombero Sugar Company management, the Government pledged the establishment of a seed cane nursery where growers can get ease of access to quality seed cane.

The public meeting was held on 17th July at Ruaha village in Kilombero and was attended by various government officials, development stakeholders and officials from Kilombero Sugar Company Limited (KSCL).



HEALTH CORNER: MAKING SENSE OF SUGAR

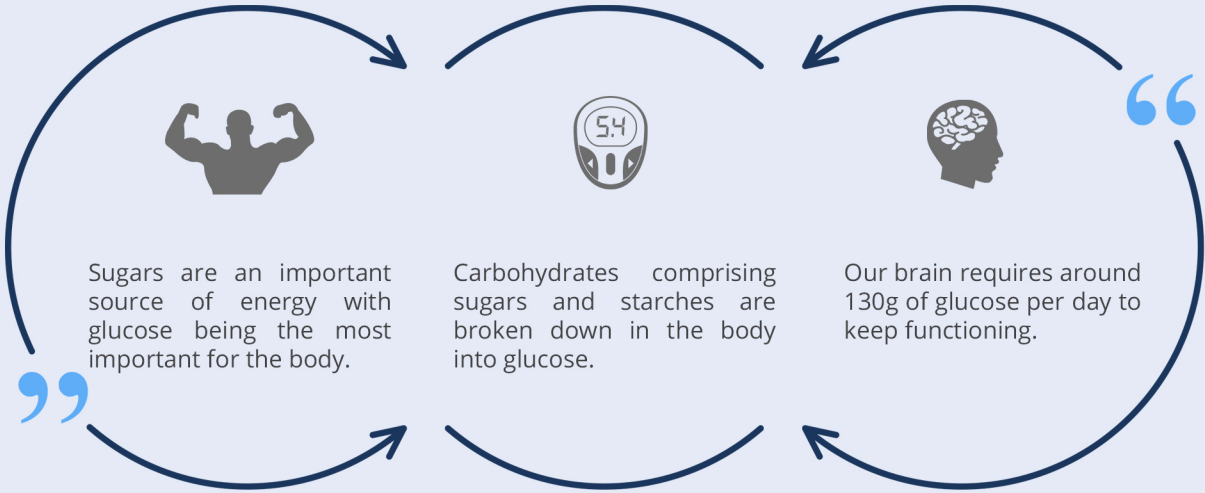
Making Sense of Sugar is a campaign that aims to inform and educate people about sugar and the role it can play in the diet in order for people to make informed choices about what they consume.

Based on robust science and facts, the campaign provides information about sugar in a way which is simple, straightforward and informative, as well as addressing common myths.

Making Sense of Sugar has been developed and funded by AB Sugar which is one of the largest sugar producers in the world, with operations in ten (10) countries and around 32,000 employees, including those employed by Illovo Sugar Africa.



The Role of Sugar in our Diets:



For more information about making sense of sugar follow us in the ongoing series in our next edition or visit: www.makingsenseofsugar.com/tz or follow us on Twitter @senseofsugar.

**KILOMBERO
SUGAR COMPANY**
AN ILLOVO SUGAR AFRICA COMPANY

CONTACT US

P.O.Box 50, Kidatu,
Morogoro, Tanzania

 +255 232 626 011

 kscl.info@illovo.co.tz

 www.illovo.co.tz

